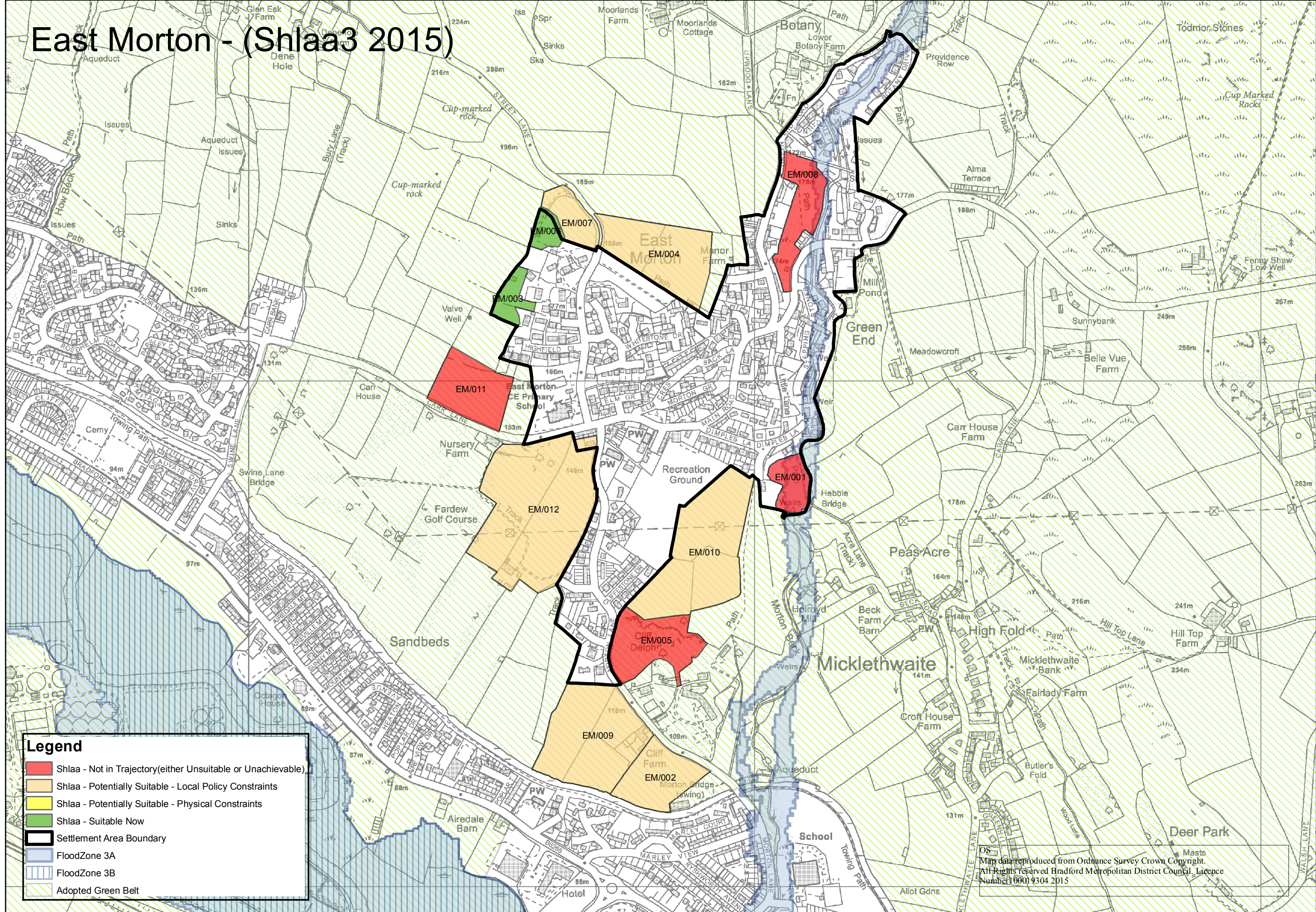


# East Morton - (Shlaa3 2015)



**Legend**

- Shlaa - Not in Trajectory(either Unsuitable or Unachievable)
- Shlaa - Potentially Suitable - Local Policy Constraints
- Shlaa - Potentially Suitable - Physical Constraints
- Shlaa - Suitable Now
- Settlement Area Boundary
- FloodZone 3A
- FloodZone 3B
- Adopted Green Belt

OS  
 Map data reproduced from Ordnance Survey Crown Copyright.  
 All Rights reserved Bradford Metropolitan District Council Licence  
 Number 100019304 2015